



Health & Safety

Policy

INTRODUCTION

In compliance with the requirement of Section 2 (3) of the Health and Safety at Work Act etc. 1974, Jones Bros Flat Roofing Ltd is effectively completing its statutory duty by preparing a written Health and Safety policy.

A copy of the policy is provided for each employee and also any interested person who may be affected by work activities of Jones Bros Flat Roofing Ltd.

In order for Jones Bros Flat Roofing Ltd to comply with its statutory duty, employees are required by law, to co-operate with the management in all matters concerning health, safety and welfare of themselves and any other person who may be affected by their acts or omissions whilst at work.

The policy also sets out the arrangements and the organisational structure of Jones Bros Flat Roofing Ltd and contains details of the appointed competent persons.

Jones Bros Flat Roofing Ltd agree that in order to ensure that the Health and Safety Policy is sustained in an effective condition, it is essential to review the documentation and revise any relevant sections.

The Directors will ensure that the Health and Safety Policy is reviewed on an annual basis and will guarantee that suitable revisions are made which reflect changes that have taken place within the Company.

Jones Bros Flat Roofing Ltd will act on any change of legislation to enable the Company to update the policy documentation.

Jones Bros Flat Roofing Ltd encourages all employees to inform their immediate Supervisor of any areas of the Health and Safety Policy which they feel are inadequate to ensure that the Policy is maintained as a true working document.

Each employee is required to sign for his or her copy of the Safety Policy.

HEALTH AND SAFETY POLICY

AMENDMENT RECORD

[illegible]

INDEX

Introduction	Page 2
Health & Safety Policy Amendment Record	Page 3
SECTION 1: STATEMENT	
Health & Safety Policy Statement	Page 5
SECTION 2: ORGANISATION AND RESPONSIBILITIES	
Management Structure Flow Chart	Page 6
Directors Responsibilities	Page 7
Company Responsibilities	Page 9
Site Foreman Responsibilities	Page 9
Operative Responsibilities	Page 10
Sub-Contractor Responsibilities	Page 11
Health and Safety Advisor	Page 12
SECTION 3: ARRANGEMENTS	
Consultation & Communication with Operatives & Third Parties	Page 13
Training	Page 14
Training Records	Page 15
Personal Protective Equipment	Page 15
Work Equipment	Page 15
Personal Tool Kits	Page 15
Fire Prevention	Page 16
First Aid	Page 16
Coronavirus	Page 16
Mental Health	Page 16
Company Driving Policy	Page 17
Accident Reporting and Investigation	Page 17
Contractors	Page 17
Waste Materials	Page 18
Construction, Design and Management Regulations 2015	Page 18
Site Welfare Facilities and Emergency Procedures	Page 18
Housekeeping	Page 18
C.O.S.H.H.	Page 19
Electrical Safety	Page 19
Asbestos	Page 20
Health Surveillance	Page 20
Noise	Page 20
Hand-Arm Vibration	Page 21
Abrasive Wheels	Page 21
Compressed Air Power Tools	Page 21
Working at Height	Page 21
Hot Work	Page 22
Manual Handling	Page 23
Materials Storage	Page 23
L.O.L.E.R.	Page 23
Confined Spaces	Page 23
Protecting the Public	Page 24
Lone Working	Page 24
Working with Non-English-Speaking Workers	Page 24
Method Statements and Risk Assessments	Page 25
Toolbox Talks	Page 25
Monitoring	Page 25
Disciplinary Arrangements	Page 26
Monitoring and Review of Health and Safety Policy	Page 26
APPENDIX	
Accident Investigation Procedures Manual	
Working at Height Policy	

SECTION 1

HEALTH & SAFETY POLICY STATEMENT

It is the policy of Jones Bros Flat Roofing Ltd to take all reasonable and practicable steps to promote healthy and safe working conditions for operatives and contractors and to ensure the health and safety of all who may be affected by the company's undertakings.

Specific objectives are: -

- The Company will do everything that is reasonably practicable to design, provide and maintain plant, equipment, protective clothing, and systems of work that are safe and an environment that is without risk.
- The Company will ensure that employees are properly informed, instructed and trained in health and safety aspects of their work.
- The Company will ensure accurate reporting and investigation of all accidents and near misses with a view to achieving reductions in accident rates by the analysis of causes and trends.
- The Company will encourage discussion and consultation with employees with a view to promoting and developing measures to ensure health and safety at work and to check the effectiveness of such measures.
- Additionally, the Company will have regular liaison with clients and sub-contractors to actively seek ways of improving health, safety, and welfare facilities.
- Company Management will conduct periodic audits/inspections and establish action plans where improvements/opportunities are identified.

To achieve this, aim all members of staff are expected to play their part and carry out their work safely in accordance with Health and Safety legislation.

I invite wholehearted co-operation of all staff to ensure that between us we meet our legal obligations and achieve safety standards of which we can all be justly proud.

A copy of this policy is to be provided to all operatives and to whom it may concern.

The management of Jones Bros Flat Roofing Ltd look upon the promotion of good Health & Safety Practices as the joint responsibility of both themselves and their operatives.

Signed

Date *10th June 2022*

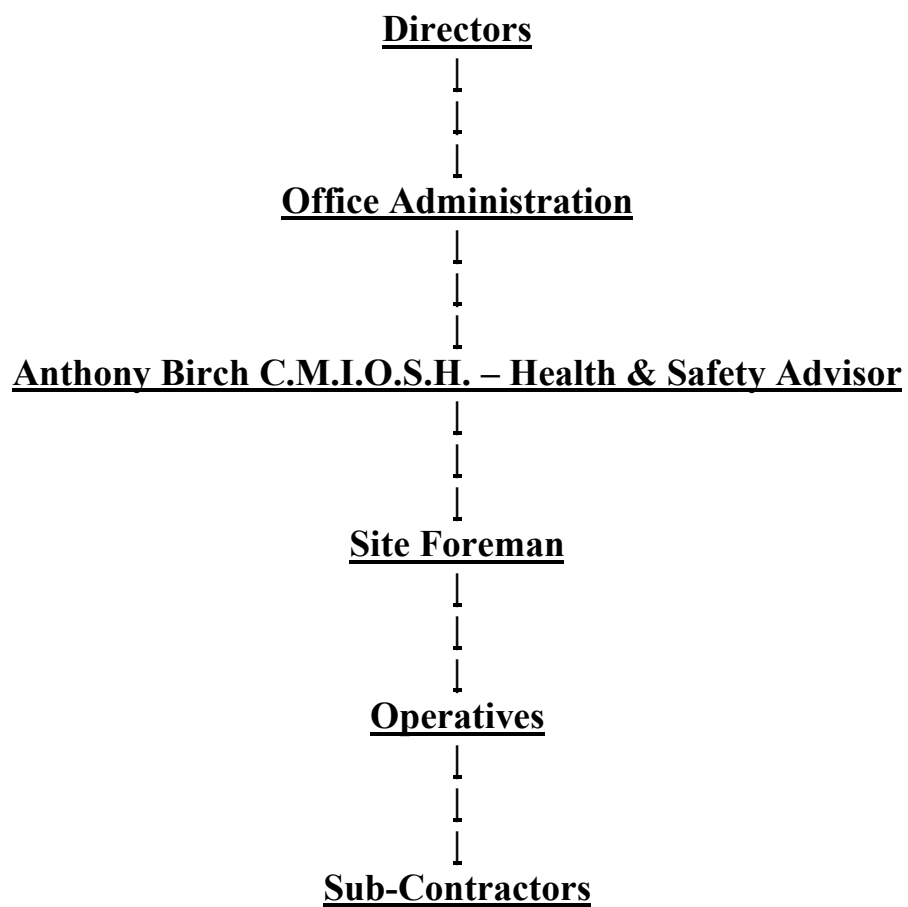
SECTION 2

2 ORGANISATION & RESPONSIBILITIES

Jones Bros Flat Roofing Ltd

17 St Marys Road, Hayling Island, Hampshire, PO11 9BY
TEL 02392 463211 E-MAIL paul@jonesbrosroofing.co.uk

MANAGEMENT STRUCTURE



2.1 DIRECTORS

The Directors are ultimately responsible for the overall implementation of Health and Safety and for liaison with Health and Safety Inspectors, Local Authorities, Fire Authorities and other appropriate organizations.

The Directors will: -

- a) Take responsibility for day to day implementation of the policy.
- b) Establish systems to monitor compliance with the statutory duties as laid down under the Health & Safety at Work Act 1974 and the appropriate Regulations and Codes of Practice.
- c) Ensuring compliance with all aspects of Health and Safety legislation, notably under the Management of Health and Safety Regulations, Provision and Use of Work Equipment Regulations, Control of Substances Hazardous to Health Regulations, Manual Handling Regulations, Construction Design and Management Regulations, Workplace (Health, Safety and Welfare) Regulations, Personal Protective Equipment Regulations and Electricity at Work Regulations
- d) Ensure there are adequate financial resources available to meet the needs of Health and Safety.
- e) Bringing all requirements to the notice of all operatives and every new operative.
- f) Review any risk assessment findings when developing policies.
- g) Institute proper reporting and investigation of ill health, injury, damage, and loss, to establish accident trends.
- h) Hold periodic meetings to discuss Health and Safety matters raised by employees, clients, sub-contractors, and safety advisors.
- i) Ensure that all levels of staff receive adequate and appropriate safety information, instruction, and training.
- j) Ensure that tenders are adequate to cover the requirements of the Health and Safety at Work Act 1974 and the appropriate Regulations and Codes of Practice.
- k) Set an example by high personal standards of application and discipline in health and safety.

When Planning Work, Directors / Managers Will:

- a) Co-ordinate and monitor the Safety Policy of the Company on their sites
- b) Ensure that effective safety communication exists within all parties
- c) Know the requirements of the Health and Safety at Work Act 1974 and other appropriate Regulations and ensure that they are observed.
- d) Determine at the contract planning stage: -
 - The most appropriate order and method of safe working practice.
 - Adequate facilities for Health Hygiene and Welfare.
 - Provision of adequate site access, egress, and lighting.
 - Hazards and situations which might lead to improvisations on site.
 - Prepare Risk Assessments for any hazardous activities to provide written instructions which establish working methods and precautions to be adopted.
 - Identify any materials which may be hazardous to health of operatives or other persons on site and prepare assessments as required.
- e) Discuss all Risk and COSHH Assessments with all relevant persons in the form of Toolbox Talks.
- f) Ensure that relevant Statutory Notices are displayed on site and ensure that all statutory records and reports are properly kept.
- g) Ensure that arrangements are made for contract start up details to be sent, as and when necessary to the Health and Safety Executive.
- h) Ensure arrangements are made for all those concerned to be provided with adequate information concerning relevant sections of any Health and Safety Plan.
- i) Carry out site inspections to ensure that safe methods of working are in operation. **If necessary, requiring work on any site to cease until proper safety standards are observed.**
- j) Reprimand any individual failing to undertake their responsibilities satisfactorily and take disciplinary action, as necessary.
- k) Determine the cause of any accident or dangerous occurrence and recommend means of preventing a recurrence.

When the Company is acting as the Principal Contractor the Contracts Manager will: -

- a) Ensure co-operation between contracts.
- b) Ensure the development of the Health and Safety Plan and the provision of information to contractors.
- c) Ensure the provision of all relevant information for the Health and Safety File

2.2 COMPANY RESPONSIBILITIES

The Company will provide:

- Safe plant and safe working methods.
- Arrangements for the safe use, handling, storage and transport of articles and substances.
- Relevant training.
- A safe place of work with safe access and egress
- A healthy working environment with adequate welfare arrangements,

The company also has similar obligations towards other persons affected by activities.

2.3 SITE FOREMAN

Site Foreman will: -

- a) Organise sites so that work is carried out to the required standard with minimum risk to individuals, equipment, and materials.
- b) Develop the Health and Safety Plan and provide relevant information to contractors.
- c) Ensure that site rules and other instructions are observed.
- d) Enter all injury accidents and dangerous occurrences into the Accident Book and report to the Site Manager. Investigate such accidents and occurrences and attempt to establish the cause to prevent a recurrence.
- e) Give all operatives instructions on their responsibilities for correct working methods and ensure details of risk assessments are understood and applied.
- f) Ensure the safe storage of materials, liquefied petroleum gas, that plant is effectively positioned and that temporary electricity supplies are installed safely.
- g) Maintain a tidy work area and ensure welfare facilities are in a clean and safe condition.
- h) Implement arrangements with the Principal Contractor and other contractors to avoid confusion relating to areas of responsibility.

- i) Check that all machinery and plant, including power and hand tools, are maintained in good condition and that persons using them are adequately trained.
- j) Ensure the suitable protective clothing and equipment is available and used.
- k) Accompany HM Enforcement Officers on any site visits and act on their recommendations. In the event of the issue of an “improvement” or “prohibition” notice by the officer, telephone details to the Site Manager and Managing Directors.
- l) Carry out regular “Toolbox Talks” training for all operatives on a regular basis and maintain records.
- m) Set an example by high personal standards of application and discipline in health and safety.

2.4 OPERATIVE RESPONSIBILITIES

All operatives are required to ensure that they: -

- a) Carry out their duties in accordance with the Company Health and Safety Policy arrangements, Health and Safety Plan and any other Rules provided.
- b) Do not use defective plant, tools or equipment and report to their immediate supervisor anything affecting the safety of any plant, tools, or equipment.
- c) Use only those items of equipment or machinery that they have been trained and authorised to use.
- d) Take care of and use all personal protective equipment as required.
- e) Conform to the information, instruction and training provided.
- f) Report all accidents and incidents to the appropriate supervisor on site.
- g) Conduct themselves in an orderly manner.
- h) Make sure they make themselves aware of the location of: -
 - First Aid Box & Accident Book
 - Fire Protection Equipment
 - Emergency Escape Routes and Assembly Points
- i) Will not consume alcohol or illegal drugs at work.

2.5 SUB-CONTRACTORS RESPONSIBILITIES

All Sub-Contractors will: -

- a) Will provide all information as required to co-operate with the Company Procedure for checking the competency of Sub-Contractors.
- b) Be expected to comply with the Company Policy for Health, Safety and Welfare and must ensure their own Company Policy is made available on site.
- c) Provide detailed method statements and risk assessments relating to high-risk activities. The content of these must be agreed prior to commencement of work and copies must be available on site.
- d) Ensure all plant or equipment brought onto site by sub-contractors must be safe, in good working condition with all necessary certificates supplied.
- e) Ensure all power tools or electrical equipment are of 110 Volts rating and conform to the latest British Standard and have suitable P.A.T. Testing records available.
- f) Report all injuries sustained or damage caused by sub-contractor's employees immediately to the Site Agent.
- g) Co-operate with site inspections undertaken by the Company and complete any required actions at the earliest opportunity.
- h) Provide suitable welfare facilities and first aid equipment in accordance with the Regulations unless arrangements have been made for the sub-contractor's employees to have use of the Company's facilities.
- i) Ensure any material or substance brought onto the site, that has health, fire or explosion risks may be used and stored in accordance with current Regulations and information must be provided to any other person on site who may be affected.
- j) Enforce the use of safety helmets at all times when instructed to do so by the Company.

2.6 HEALTH AND SAFETY ADVISOR

Jones Bros Flat Roofing Ltd, contract the services of an external Health & Safety Adviser. This person is Anthony Birch, C.M.I.O.S.H. of Anthony Birch Health & Safety Services Ltd.

These services include the following:

- a) Undertaking an annual Health & Safety Audit to review the Health & Safety performance of the business and compliance with current legislation.
- b) Carry out independent site inspections at the request of the Company.
- c) Provide assistance with ensuring Method Statements, Risk Assessments and Safe Working Practices are in place, workable compliant with legislation.
- d) Advise on Regulation changes.
- e) Be available to attend meetings to discuss Health & Safety issues with clients and contractors.
- f) Undertake competency assessments of Sub-Contractors who are to be engaged on behalf of Jones Bros Flat Roofing Ltd.

SECTION 3: GENERAL ARRANGEMENTS

3.1a CONSULTATION / COMMUNICATION WITH OPERATIVES

The Company will consult with its operatives in good time on matters relating to their health and safety at work. In particular, in relation to: -

- a) Measures which could substantially affect employee's health and safety.
- b) Arrangements for appointing competent persons to assist in compliance with health and safety requirements and the implementation of emergency procedures.
- c) Information on risks and preventative measures.
- d) Information on the planning and organisation of health and safety training.
- e) The effects of new technology on the health and safety of employees.

The Company will decide on the most appropriate method of consultation. If required all documentation and instructions will be translated into the required language if English is not spoken / understood to a sufficient standard.

If such persons are employed on site then a suitably competent operative will be designated as a buddy to work alongside this person and communicate in an agreed method to ensure all procedures, tasks and controls are suitably understood. The translated documents will be kept on site at all times and read prior to the relevant activity commencing.

3.1b CONSULTATION / COMMUNICATION WITH THIRD PARTIES

The Company will consult with all Third Parties including Clients, Sub-Contractors and Architects etc. in good time on matters relating to their health and safety at work. In particular, in relation to: -

- f) Measures which could substantially affect health and safety of anyone affected by the Company Undertaking.
- g) Arrangements for appointing competent persons to assist in compliance with health and safety requirements and the implementation of emergency procedures.
- h) Information on risks and preventative measures.
- i) Information on the planning and organisation of health and safety training.

The Company will decide on the most appropriate method of consultation / communication, but this will normally involve attendance of meetings which will be recorded.

If required all documentation and instructions will be translated into the required language if English is not spoken / understood to a sufficient standard.

3.2 TRAINING

It is the responsibility of Management to ensure the health safety and welfare of all operatives and to provide appropriate training to all new staff on joining the company and periodically thereafter. All such training will be properly programmed and recorded. This will start with an induction programme to cover all of the basic requirements.

Site Inductions are also to be provided in conjunction with any Principal Contractor. All those working on behalf of Jones Bros Flat Roofing Ltd are to co-operate fully with the requirements.

This will include general Health & Safety training together with task specific training which will be monitored, and training records signed once competence is agreed. Toolbox talks are to be given in relation to the use of hazardous substances, site specific requirements, use of hired in plant, environmental procedures.

Generic Training will include:

- Safe Working at Height including safe use of steps and ladders
- Manual Handling
- Noise Awareness
- Hand-Arm Vibration
- Asbestos Awareness
- Requirements of the Control of Substance Hazardous to Health
- Safe use of Fire Extinguishers.
- Abrasive Wheels

Additionally, all employees and Sub-Contractors are to hold valid certificates for the use of any equipment as required under the Provision or Work Equipment Regulations.

All Risk Assessments and Method Statements are to be suitably communicated to all those who are involved in the task. Persons will be issued with the documents and be asked to confirm they understood and follow the requirements by signing an acceptance form.

3.3 TRAINING RECORDS

Copies of all training records are to be kept at Jones Bros Flat Roofing Ltd Head office. Additional copies are to be kept on site and issued to the Client as required.

A training needs analysis is kept at Jones Bros Flat Roofing Ltd. This is suitably reviewed to assess any gaps in training.

3.4 PERSONAL PROTECTIVE EQUIPMENT (P.P.E.)

All relevant Personal Protective Equipment is provided to operatives and must be used where appropriate. Operatives must report all loss, damage, or defect to the employer as soon as possible.

The Company will provide all personnel with instruction, information and training in the correct use, maintenance and storage of any PPE issued and the hazards it provides protection against, together with details on any limitations.

Details of any drying room facilities will be given during Site Specific Inductions

Failure to use personal protective equipment supplied will be considered by the Company as an act of serious misconduct and subject to action being taken under the Company's Disciplinary Procedure.

3.5 WORK EQUIPMENT

When purchasing new Work Equipment, the Company will ensure that the item selected is suitable for the task following a thorough assessment. The Company will also endeavour to buy equipment with low noise and vibration levels.

All Work Equipment will have suitable CE Markings and where required guards will be fitted. Employees are to be informed that it is an offence to misuse or interfere with anything provided in the interest of Health & Safety which includes machine guarding.

All Work Equipment is to be inspected prior to use and any defects reported to management immediately for either repair or replacement.

Work Equipment will only be used by trained and authorised persons.

3.6 PERSONAL TOOL KITS

Operatives providing their own tool kits are required to keep them in good order and Jones Bros Flat Roofing Ltd reserves the right to inspect them from time to time.

3.7 FIRE PREVENTION

The Site Manager is responsible for Fire Prevention and ensuring that all staff are familiar with Fire Fighting Equipment and Procedures. All Fire Extinguishers are inspected annually, and appropriate records made.

Fire safety procedures and precautionary measures are to be laid out in the site Health and Safety Plan and are to be communicated to and complied with by all operatives on the site.

3.8 FIRST AID

First Aid facilities are to be kept in each works vehicle and on each major worksite. First Aid procedures are to be communicated to all persons during Site Inductions.

A list of first aid facilities, qualified first aiders and local emergency services will be posted in each construction site office.

3.9 CORONAVIRUS

Protecting our staff, their families, customers, and the general public from the risks presented by the Coronavirus is a top priority for Jones Bros Flat Roofing Ltd. The majority of our work is outside, and restrictions have been placed relating to who can enter our offices and trade counter.

We have issued a specific Risk Assessment relating to Coronavirus and the relevant controls. All staff have received training relating to the items noted in the Risk Assessment and required control measures.

Relevant PPE, including Disposable Gloves, Sanitiser Gel and Face Masks have been issued to all.

Site Foremen are to monitor the control measures and Management will review procedures and controls on a regular basis, always endeavouring to follow both Government and Industry Guidance.

3.10 MENTAL HEALTH

Jones Bros Flat Roofing Ltd are aware of the issues and risks around Mental Health. Depression, Stress and Anxiety are responsible for the largest amount of work time lost in the UK.

The Management of Jones Bros Flat Roofing Ltd will do all in its power to support any operative who raises concerns. We will also undertake Toolbox Talks and provide literature to help raise awareness of this subject among our Workers.

3.11 COMPANY DRIVING POLICY

Due to the nature of our operations we require that employees drive company vehicles whilst at work to operational sites. The company recognises employees as representatives of the company whilst driving at work and requires that all employees observe the highway-code as a minimum requirement. Company vehicles are maintained under contract however all employees have a duty to ensure that the vehicle is road worthy on a daily basis. Checking of tyres, lights and other essential features of the vehicle is the employee's duty and correct use of the vehicle is also important.

All employees must observe the company rules regarding the conduct of company vehicle users and relevant safety instructions.

Operatives have a duty to ensure that all journeys are properly pre-planned, and that the office is aware of your intended destination. Regular breaks are necessary particularly when driving for more than an hour in one continuous driving period. Drinking any amount of alcohol is strictly forbidden and the company does not advise use of mobile telephones whilst driving. Should telephone calls be made in the car a suitable parking place should be sought and the vehicle should be stationary prior to making the call. Do not overload your vehicle or allow improper use of the vehicle e.g. passengers riding in the van compartment.

3.12 ACCIDENT REPORTING AND INVESTIGATION

The Company operates a full Accident and Investigation Procedures Manual. (See Appendix).

In the event of an accident, Fire, Police and Ambulance are to be contacted as appropriate and all accidents to operatives whilst they are at work, and all other persons on Company controlled sites, must be recorded and reported to the appropriate authorities in accordance with statutory requirements.

All accidents involving drivers, whilst driving, must be reported to the police where appropriate, properly recorded and reported and may be investigated by the Company.

3.13 CONTRACTORS

When contractors are engaged on the Company's behalf, arrangements will be agreed to ensure that:

- a. The contractors and their operatives are not placed at risk because of the activities of Jones Bros Flat Roofing Ltd.
- b. Jones Bros Flat Roofing Ltd operatives are not placed at risk because of contractor's activities.

Checks for competency are to be made by Jones Bros Flat Roofing Ltd relating to Contractors. They will be asked to provide information relating to both the Companies Health & Safety Performance and details of the competence of those working on their behalf.

3.14 WASTE

All waste is to be correctly disposed of in line with both legislation requirements and site-specific requirements. Jones Bros Flat Roofing Ltd will do all can to follow procedures and expects all persons working on behalf of the Company to do the same and be pro-active towards following all Environmental procedures.

3.15 CONSTRUCTION, (DESIGN AND MANAGEMENT) REGULATIONS 2015

To ensure compliance with the CDM Regulations, Jones Bros Flat Roofing Ltd will develop Project Safety Plans where it is Principal Contractor and will provide all other information as requested by any of the duty holders.

Competence checks of sub-contractors will be undertaken to ensure that all persons working under the direct control of the Company are suitably trained and able to complete that tasks in a safe manner.

At the completion stage of the project a Hand-Over Safety File will be issued where the Company is Principal Contractor and will provide all other information as requested by any of the duty holders.

3.16 SITE WELFARE FACILITIES AND EMERGENCY PROCEDURES

The Site Manager will establish the welfare and first aid requirements before work starts taking into account any sub-contractors' requirements if applicable.

The Company will ensure adequate welfare facilities at all work sites with appropriate numbers of toilets, hand washing facilities, and sufficient rest facilities with places provided for drinking and eating food. Facilities for changing and drying clothes are also to be provided.

If the Company is working as a contractor, the Site Manager will arrange with the Principal Contractor to ensure all facilities are in place prior to sending Operatives to the site.

If working under the control of a Principal Contractor Emergency Procedures are to be agreed upon and suitably communicated to all persons working under the control Jones Bros Flat Roofing Ltd.

In cases where Jones Bros Flat Roofing Ltd are the Principal Contractor Emergency Arrangements will be agreed with the Client and information suitably communicated to all persons working under the control of Jones Bros Flat Roofing Ltd. The Site Foreman will ensure the address of the Site and the nearest Accident and Emergency Unit are displayed in a prominent position together with the location of any muster point.

3.17 HOUSEKEEPING

Company Operatives are responsible for the general tidiness of areas under the control of Jones Bros Flat Roofing Ltd In particular this extends to keeping doorways, corridors, staircases, pedestrian routes and exits free from obstructions and hazards.

3.18 C.O.S.H.H.

The Company will carry out COSHH Assessments to quantify the risks to Operatives during the use of hazardous substances.

Site supervision must ensure that only those materials and substances assessed are used on site, and that P.P.E noted in the COSHH Assessment is provided and correctly used.

The COSHH Assessment may also stipulate certain control measures required allowing safe use of hazardous substances. All Operatives will be made aware, by instruction and training, of these precautions and work accordingly.

Where sub-contractors are involved every effort should be made to obtain from them an assessment covering their work operations on site.

3.19 ELECTRICAL SAFETY

The Company only permits persons classed as ‘competent’ under the Electricity at Work Regulations 1989, to work on electrical equipment.

All electrical work carried out on the premises will be in accordance with the latest regulations published by the Institute of Electrical Engineers for Electrical Installations.

Under the Electricity at Work Regulations 1989 there is a statutory requirement to maintain electrical equipment in a safe condition so that users are protected from such hazards as electric shock, burns or fire. Testing of equipment will be in relation to its use. Generally, office equipment will be subject to an annual test, and equipment used on site to a six-monthly test. Any equipment found to be faulty will be removed from service immediately and labelled accordingly. Records will be kept for the life of the equipment.

The Company expects employees to carry out a visual inspection of electrical equipment prior to use and to report all defects for repair before the equipment is used. No employee is to knowingly use defective equipment. These guidelines apply whether the equipment is owned by the company or hired. Any defects will be reported to the supervisor or site manager for further action.

All employees will receive instruction in the use of electrical power tools prior to use.

3.20 ASBESTOS

Prior to accepting all work Management will endeavour to establish if asbestos is present in the building and if so if it is likely to be disturbed by the task to be undertaken.

The Client will be asked to provide an Asbestos Management Plan for the building if the property is a commercial undertaking.

If there is no information available, then specialist help will be sought, and the situation discussed with the Client. Jones Bros Flat Roofing Ltd will not remove any asbestos as such work will be contracted to specialist licensed contractors.

All of the Jones Bros Flat Roofing Ltd Team have received Asbestos Awareness Training and regular Toolbox Talks are undertaken to remind workers of the risks and suitable control measures.

If materials suspected to contain asbestos are discovered, work shall STOP immediately, and Management and the Client advised. Decisions will then be taken and communicated relating to the safest course of action.

All Management & Staff have been trained in the HSE Guidance Document “EM1 asbestos essentials.” In particular a copy of the flow chart to assist in what action should be taken if materials thought to contain asbestos or damaged materials containing asbestos are discovered has been issued and is kept on all major sites.

All Asbestos surveys and associated work will be undertaken in line with the Guidance Document HSG 264 Asbestos “The Survey Guide”

3.21 HEALTH SURVEILLANCE

The Company have assessed the work undertaken and deemed that the risks to health are minor. We currently therefore do not involve a Health Surveillance Programme although we do have a Pre-Employment Questionnaire that Employees are asked to complete so that they can advise the Company of any known Medical Conditions that may be relevant.

In addition, Training will be undertaken for subjects such as; Noise Awareness, Hand Arm Vibration, Dust Inhalation and Asbestos.

Employees are encouraged to advise Management of any change in health whilst working for Jones Bros Flat Roofing Ltd in order that we can review working procedures and assess risks.

3.22 NOISE

When noise is identified as a hazard, a specific noise assessment will be carried out as required by the Noise at Work Regulations 2005.

Those at risk will be provided with hearing protection and given appropriate training relating to risks involved together with the correct use of equipment provided.

Regular monitoring of noise levels will be undertaken, and noise assessments reviewed.

The Company adopts a policy of considering noise levels of new machinery when purchasing.

3.23 HAND-ARM VIBRATION

The Company will endeavour to comply with the Control of Vibration at Work Regulations 2005 at all times.

Vibration levels of tools are to be logged and if felt necessary (i.e. if long duration work is planned) then trigger times are to be calculated to ensure the Exposure Limit Value is not reached by any one person.

Suitable Risk Assessments are to be undertaken and training provided to those at risk.

The Company adopts a policy of considering vibration levels of new machinery when purchasing.

3.24 ABRASIVE WHEELS

All activities will be carried out in accordance with The Provision and Use of Work Equipment Regulations 1998.

Only trained and certified persons, appointed by the Company may change Abrasive Wheels. A note shall be displayed in the site office noting these Competent Persons.

3.25 COMPRESSED AIR POWER TOOLS

Site Managers will ensure that owned or hired plant certificates of conformity are available on site at all times if this type of equipment is present under the control of the Company.

3.26 WORKING AT HEIGHT

The Working at height Regulations 2005 require specific arrangements in relation to selection, use and inspection of equipment and places of work at height. A basic guide to the regulations is held in an appendix to this policy.

Working platforms, edge protection and fall arrest equipment shall be provided and maintained in accordance with the regulations and subject the findings of a risk assessment. If scaffolding is to be used, then it must be erected in accordance with access code and by competent Scaffolders. An inspection of the scaffold must be carried out by a competent person under the new regulations on a weekly basis as a minimum.

Access equipment should be carefully selected to take into account the following.

- Location and proximity to other hazards e.g. overhead obstructions/cables
- Duration of work
- Type and weight of materials

- Number of workers
- Ground conditions
- Other contractors working close by or members of the public
- Weather conditions (this must be continually monitored)

When considering all these factors it is important that the safest access equipment is selected for the given task, in particular the selection of equipment that prioritises general protection measures over individual; that avoids the use of ladders or step ladders in favour of working platforms and that ensures work at height is carried out with minimum risk to those carrying out the work and other affected by the work.

All operatives should be reminded that these items are for short duration activities and do not generally provide a suitable place or safe system of work. If ladders are selected for use then aids to ladder safety must be introduced i.e. out stays, secure lashings or ties.

The company makes regular use of mobile towers, ladders and stepladders for access. Operatives will be specifically trained in the safe use of this equipment and all access equipment will be subject to regular inspection. Inspections will be recorded on a regular basis and records will be available to all for checking prior to removing the equipment from the store.

Protection of the public should always be considered when erecting and using scaffolds and other work equipment at height i.e. MEWP's

All access equipment will be regularly check and properly maintained. Scaffolds and other similar structures will be inspected on a weekly basis minimum or following an event that may have damaged the structure i.e. adverse weather conditions. Inspections will be carried out by a competent person and recorded on our standard inspection form.

A specific Working at Height Policy has been introduced and this should be read in conjunction with this Policy.

3.27 HOT WORK

Jones Bros Flat Roofing Ltd undertakes very little Hot Work. However, it recognises the potential dangers involved and the need for stringent control measures.

Hot Work will only be carried out by Appointed, Trained & Competent Persons and will always be covered by our "Hot Works Permit."

The Hot Works Permit is to be signed by both the Supervisor and the Appointed Person once all checks have been made and appropriate control measures, such as ensuring good Housekeeping and that suitable Fire Extinguishers are present.

The site is not to be left until the relevant fire watch period has been served on the completion of Hot Works.

3.28 MANUAL HANDLING

Manual handling is to be avoided wherever possible. Risk Assessments are to be undertaken to identify any practicable ways of eliminating or reducing the need to Manually Handle.

All Operatives are to receive Manual Handling Training to ensure they have the required techniques to avoid injury.

3.29 MATERIAL STORAGE

The Site Manager is responsible for ensuring areas are allocated for stacking and storing components.

When playing the role of a Contractor these areas are to be agreed with the Principal Contractor.

3.30 L.O.L.E.R.

All lifting equipment will be used in accordance with the Provision and Use of Work Equipment Regulations 1998 and the Lifting Operations and Lifting Equipment Regulations 1998.

The Company will ensure arrangements are in place for the carrying out of statutory inspections and the keeping of records. Copies of the necessary thorough test examination certificates will be maintained on site.

Site Managers will ensure that Hired in Plant examination records are requested from the Hire Company at the time of hire.

All lifting operations will be done under the control of a trained and competent person. Lifting Equipment that has been subjected to an overload, or has been damaged, must be reported immediately and taken out of use pending an examination and, if necessary, repaired, and re-tested.

3.31 CONFINED SPACES

All work in confined spaces will be carried out in accordance with the Confined Spaces Regulations 1997.

If it is not reasonably practicable to prevent work in a confined space, a risk assessment will be carried out and a safe system of working written.

Suitable arrangements for the rescue of any persons in the event of an emergency will be in place before any person enters or works in a confined space.

All persons entering or working in a confined space will be trained and competent in both the tasks they have to carry out and the safe system of work.

3.32 PROTECTING THE PUBLIC

All work will be carried out in accordance with the Health and Safety Executive Booklet HS(G) 151 “Protecting the Public, Your Next Move”.

As a general policy, where reasonably practicable, sites will be enclosed by a 2 metre fence and closed by gates that can be secured when the site is unattended. Warning signs are to be displayed and steps taken to prevent access to site, particularly by children.

In the event that such a perimeter fence cannot be provided, excavations will be fenced, vehicles and plant immobilised, stores of materials stabilised, electricity, gas and other fuels isolated and secured, access to elevated areas removed and secured.

3.33 LONE WORKING

Lone working will be avoided as far as practicable. Where necessary the Site Managers must ensure that the hazards are identified, and the risks assessed.

Lone Workers will be supervised by one of the following means, appropriate to the work situation concerned: -

- Periodic supervisory checks,
- Periodic contact by telephone or radio,
- Automatic warning devices if not periodically cancelled by the lone worker
- Emergency alarms operated manually or in the absence of any activity.

3.34 WORKING WITH NON-ENGLISH-SPEAKING WORKERS

In the event that workers are engaged by Jones Bros Flat Roofing Ltd who do not have a comprehensive understanding of English then a “Buddy System” is to be introduced.

The Buddy will be informed that it is his role to stay with the Non-English-Speaking Worker and make sure all requirements are explained and understood. He will also provide Supervision.

Management have read the HSE Guidance note “Consulting employees whose first language is not English” and will adopt the recommendations should they arise. These will include:

- Allowance of adequate time to ensure all instructions are understood
- If available ask a colleague to interpret
- If required having procedures translated into the employees first language
- Use pictorial information and internationally understood pictorial signs
- Being aware of any cultural differences

3.35 METHOD STATEMENTS AND RISK ASSESSMENTS

Generic Method Statements and Risk Assessments have been produced to establish a safe system of working for most of the Company's areas of operation.

Hazards are identified within them, and an assessment of risk is calculated. They include the implementation of suitable and sufficient control systems. Relevant copies will be held on site.

Generic Risk and COSHH Assessments cover elements of the key work undertaken by the Company providing a basis for developing Method Statements.

The Site Manager will ensure that where work within their control is subject to a method statement that all relevant personnel are aware of the requirements.

Any deficiencies or unforeseen hazards that come to light during the works must be reported immediately and where necessary the work stop. The Method Statement is then to be reviewed and any additional control measures introduced.

3.36 TOOLBOX TALKS

Toolbox Talks are to be provided by the Site Manager on a regular basis (minimum fortnightly). In addition to them being undertaken by the Site Manager, other members of staff including, Directors, and the Health and Safety Advisor are encouraged to undertake them. All Toolbox Talks are to be suitably recorded.

Talks are to cover a wide range of subjects including:

- Method Statements and Risk Assessments
- COSHH Safety Data Sheets
- New Work Equipment
- Hazard Alerts
- Site Rules

3.37 MONITORING

Site inspections are to be undertaken by Jones Bros Flat Roofing Ltd Management on a daily basis with the findings recorded on a site inspection form. Additional independent inspections are to be carried out by the Company Health & Safety Adviser as required.

The Proprietor will ensure that regular inspections of all tools machinery and equipment are undertaken. A record must be kept, and all staff are asked to co-operate in this, and any defects or deficiencies noticed between inspections should be reported.

The Proprietor will also ensure that regular inspections of all major worksites are carried out and recorded. These inspections will cover housekeeping, working practices and hazard identification. All staff are asked to co-operate in this and report any concerns between inspections. All inspections are to be recorded.

3.38 DISCIPLINARY ARRANGEMENTS

Failure to comply with the Company's Health and Safety Policy may result in disciplinary procedures, particularly respecting serious infringements.

3.39 MONITORING AND REVIEW OF HEALTH AND SAFETY POLICY

To ensure the effectiveness of the Health and Safety Policy in providing and maintaining environments and systems of work that are safe, senior management will meet on a regular basis (at least annually) to discuss any accident reports and the performance of the Company and its compliance with this policy.